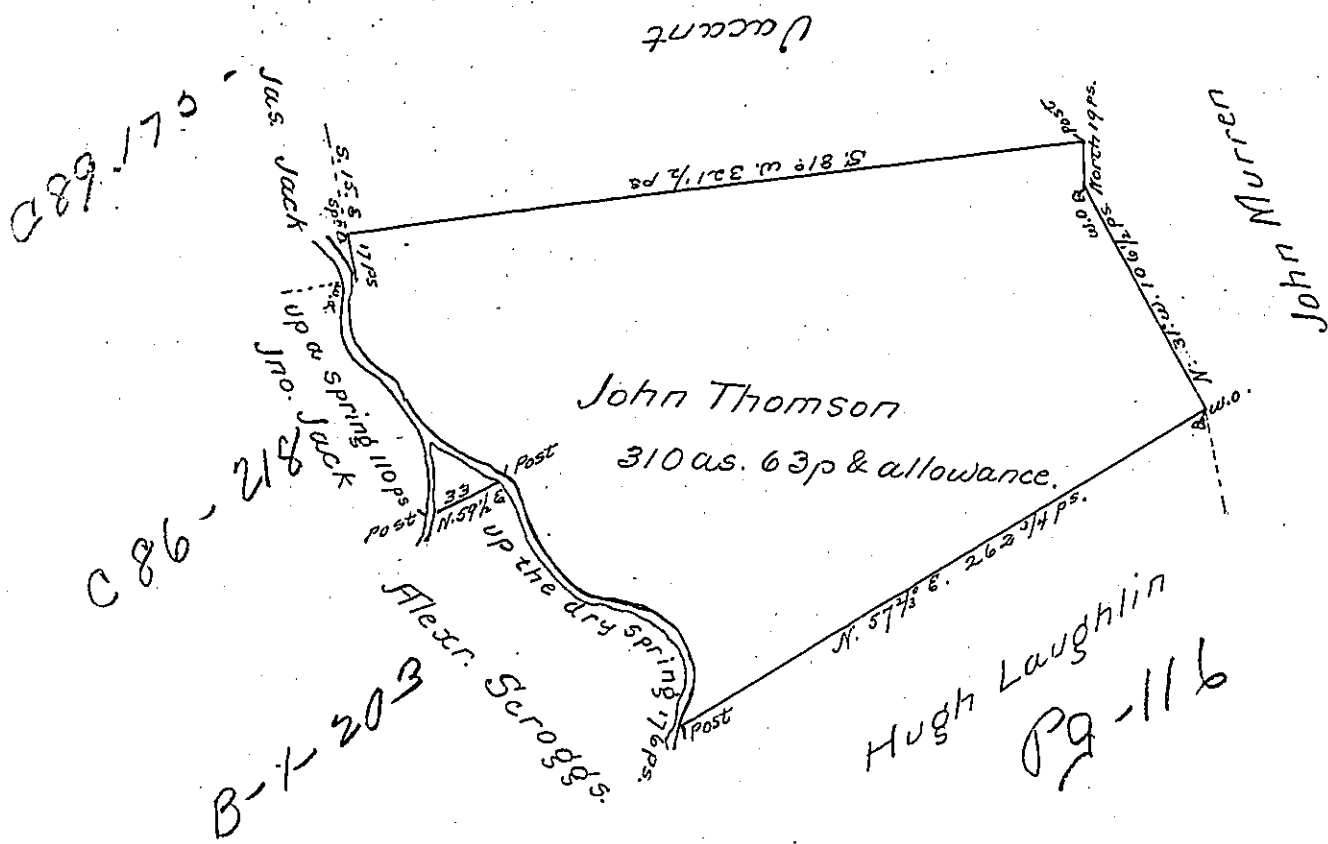


P-5-1 214



A Draught of a Tract of Land situate in  
 Hopewell Township in the County of Cumberland  
 containing Three hundred and ten acres and sixty  
 one perches and an allowance of Six (six & l  
 i t e r a t e d) Thomson the 15 (oblite  
 r a t e d) nce of an Order of Survey dated A (oblite)  
 1766 No. 930

John Armstrong D.S.

To John Lukens Esqr.)  
 Surveyor General )

IN TESTIMONY that the above is a copy of the original remaining on file in  
 the Department of Internal Affairs of Pennsylvania, made  
 conformably to an Act of Assembly approved the 16th day of  
 February, 1833, I have hereunto set my Hand and caused  
 the Seal of said Department to be affixed at Harrisburg,  
 this seventh day of January 1902

James W. Fatta  
 Secretary of Internal Affairs.